

The SYCLONE is a highly sensitive handheld Gamma-Ray spectrometer capable of identifying single or multiple isotopes simultaneously. The SYCLONE also provides the user with various functions such as Search and Find, optional Neutron Detection, Nuclide ID, Dose Rates and accumulated Dose Rate.

- Large isotope library
- Lightweight with longer battery life
- RadView software for integration
- Large backlight display
- Automatic energy stabilization (no check source required)
- Easy to follow menus
- Large internal memory



SYCLONE

PORTABLE GAMMA-RAY SPECTROMETER (WITH OPTIONAL NEUTRON DETECTION)

Detect and identify specific radioactive isotopes in a sample

The SYCLONE Gamma-Ray spectrometer utilizes the highest quality Thallium doped Sodium Iodide crystal, combined with an integral high signal-to-noise ratio PMT and state-of-the-art electronics and embedded micro controller firmware. All of these enhanced features allow the SYCLONE to be one of the most accurate portable Gamma-Ray spectrometers when it comes to identifying specific and/or multiple isotopes even with weak gamma sources. The mechanical assembly of the SYCLONE is robust and designed for field applications where harsh environments are commonplace.

Simplified and Flexible

The SYCLONE operating system utilizes sensible easy to read and follow menus. The multi-position joystick and large LCD backlit display provides easy navigation through menu selections. Detailed spectral information is clearly and precisely displayed so knowledgeable users have the ability to visually identify peaks in the histogram. Various on-screen messages assist the user when immediate attention is required for issues such as preset timing, high radiation levels, alarm settings and warning messages.

Remote SYCLONE PC Spectral Analysis and Data Storage Software

The SYCLONE is equipped with a high capacity internal memory that allows large amounts of data to be stored by record number, date and time. Stored data such as spectral and dose rate information can be easily downloaded to a PC via a mini USB or Bluetooth (optional). The downloaded data can then be displayed and managed with RadComm's exclusive RadView software. Primary features such as the selection and highlighting of Region Of Interest (R.O.I.) details and Zoom In/Out of the gamma energy histogram can be easily performed. The SYCLONE PC software has all the necessary features that will meet the needs of virtually any user.

Size

- Detector Dimensions:
5.9" H(15cm) x 8.25" L(21cm) x 4" W(10cm)
- System weight: 3.6lbs (1.6kg)
- Detector case: Durable plastic with protective silicone sleeve

Electronics

- Integral PMT with EM shielding
- High speed DSP circuitry with High SNR
- Ultra stable high voltage
- Software adjustable
- Mini USB port. Optional Bluetooth
- Battery: Internal Lithium Ion rechargeable.
- Operating time: 8 hrs. Optional external battery pack

Environmental

- Operating Temperature: -20°C (-4°F) to +60°C (140°F)
- Relative Humidity: 93% non-condensing at 40°C (104°F)
- Shock Resistance: Complies with ANSI N42.34
- EM Compliance: Complies with ANSI N42.34 and CE requirements for safety RFI and EMI directives FCC CFR47, Part 15, Subpart B, Class B compliant

Display

- Backlit RGB color LCD 320x240 resolution
- Viewing area: 3.5"(8.9cm) TFT LCD

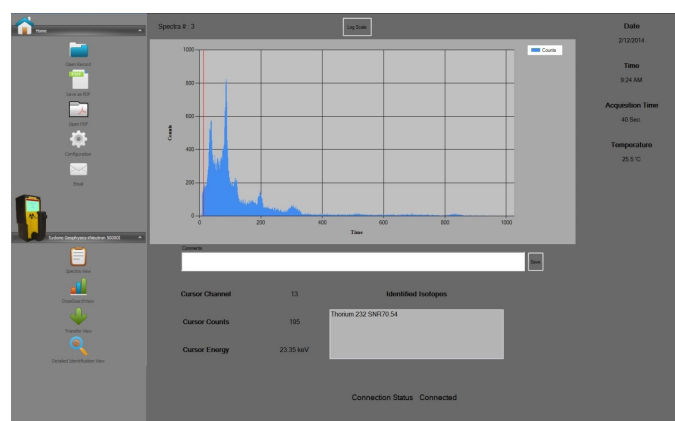
Software

- Windows™ based Syclone application software
- Easy to use menu driven interface
- Configurable data storage with backup
- Emailing capability with network connection
- Data Storage - 100,000 Dose Rate samples/498 Spectra
- Data format complies with ANSI N42.42
- RadView software for integration

Spectrometer Specifications

- Gamma NaI - Size 1.5" (38mm) x 2" (51mm)
- Geiger-Mueller, size 0.59"(12mm) x 1.9" (45mm)
- Energy Resolution 8.0% or better for 662 KeV
- Energy Range: 30 KeV to 3.0 MeV (Gamma)
- Optional Neutron Detector - Sensitivity - 5.1 CPS/NV
- System Calibration Software Monitor with Operator Alert
- Accumulate dose up to 5 Sv, custom increase
- Automatic stabilization via internal K-40
- Manual stabilization via 0.25 uCi Cs-137 source
- Gamma Spectrum - 1024 Channels, channel capacity 16 bits
- Correction - non-linear energy calibration
- Preset time - up to 5400 sec.

RadView Analysis Software



Corporate Head Office

Scott Aikin
Saikin@radcommsystems.com
Jeff Adams
jadams@radcommsystems.com
2931 Portland Drive
Oakville, ON Canada L6H 5S4
Tel. +1 (905) 829-8290
Toll Free. 1 (800) 588-5229
Fax. +1 (905) 829-1406

USA

Joshua Hunter
jhunter@radcommsystems.com
602 E. Lincolnway Ave.
Valparaiso, IN USA 46383
Tel. +1 (773) 680-8430
Toll Free. 1 (800) 588-5229
Fax. +1 (219) 510-5764

Europe

Wim van Hove
wim.van.hove@radcommeurope.com
Watertorenweg 32, 2230 Herselt, Belgium
Tel. +32.14.75.02.13
Fax. +32.14.75.02.16

China

Zhenhau Wang
wang.zhenhau@ehc-global.com
212-215 Malu Industrial Park, No. 58
Chen Bao Rd., Jiading
Shanghai, 201801, China
Tel. +86-21-69153031
Fax. +86-21-69153231

Latin America

Eduardo Ballesteros
analiticacontrol@prodginy.net.mx
Amatista No.27, El Pedregal
Atizapan de Zaragoza, 52948, Estado De Mexico
Tel. (52) 55 5077 4633/ (52) 55 3615 4910

Black Sea

Osman Tureyyen
metkim@metkim.com
Kavacik, Onarimli Sokak
No 9 Altay Han
Daire: 8 Beykoz, Istanbul, Turkey
Tel. +90 (216) 425-1412
Fax. +90 (216) 425-1432

India

Neelakshi Bhargava
neelakshi@radcommsystems.co.in
C-34, Ground Floor, Sawan Park, Ashok Vihar
New Delhi 110052, India
Tel. +91-9717671924
Fax. +91-9818650118