

Low level radiation detection for small to medium weigh scales, pedestrian and area monitor applications

- Plug and Play setup
- Industry leading detection technology
- Advanced ROI analysis
- Simple operation with remote service capability
- Easy to adjust alarm thresholds



RC17WATCHDOG

LOW LEVEL RADIATION DETECTION

Plug and Play Setup

The RC17Watchdog will arrive ready to protect your facility. All the operator needs to do is bolt the unit to the ground and plug the system into a 87-240 Vac power supply and the RC17WatchDog is ready to go to work!

Large Detection Surface for Many Applications

The RC17WatchDog features a large 1054ⁱⁿ₃ (17.3L) of the highest grade Polyvinyl Toluene (PVT) providing a wide angle-of-view to ensure the greatest area will be scanned at all times. This system is flexible enough for many applications from all material handling and storage equipment, small to medium size weigh scales, pedestrian and general area monitoring.



Advanced Detection Technology that is Easy To Use

Utilizing RadComm's unique ROI analysis technology ensures Low Level Radiation cannot escape the RC17WatchDog's vigilant sight! At the push of a button the operator can choose to use the system's default alarm settings or customize them to maximize sensitivity. Optional network connectivity is available with RadComm's exclusive RadView software. The RadView software provides the user with a view of the histogram for detailed analysis, logs every alarm event and has input fields for user comments.

Size

- Detector box size: H 96.0" x W 9.0" x D 6.0" (H 2438.4mm x W 228.6mm x D 203.2mm)
- Detector weight: *90 lbs (*40.8 kgs) *Estimated
- Large premium grade PVT detector – 1054 in³/17.3 Liters
- Display – Graphic TFT colour LCD 320x240 resolution
- Viewing area: 3.5" diagonal (9 cm)
- Insulated detector box with NEMA 4 (IP65) rating

Electronics

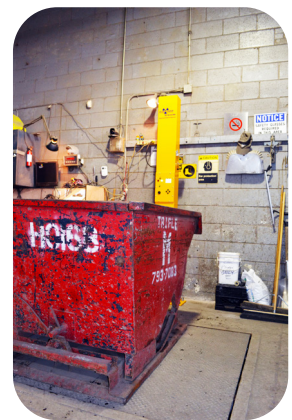
- High Signal-to-Noise ratio Integral PMT with EMI shielding
- High speed micro-controller with high speed pulse processing technology
- Audio (up to 90 dB) with Red Light/Green light and large reset button
- Stable low noise, high voltage power supply
- 87-240Vac power supply input
- Internal non-radioactive test source for detailed and repeatable checks
- Retro reflective optical sensor
- RJ45 connector
- Internal electronics operating temperature: -4°F to 131°F (-20°C to +55°C)
- Internal rechargeable battery for system backup power for up to 6 hours

Software

- Menu driven user interface
- Selectable units of measure: CPS, Sv/h, or R/h
- Dose measurement: Sv/hr, R/hr
- Adjustable dose and ROI Alarm thresholds
- Smart mode optical sensor
- Noise reduction algorithm
- RJ45 connection for online service and support
- Internal memory to store up to 200 Alarms
- Optional PC software: RadView

Response/Sensitivity

- Energy range: 45 KeV to 2.0 MeV
- Sensitivity: 260 cps/uCi of Cs-137 @ 1 meter
- Photon and Particle Sensitivity: X-Ray and Gamma



Corporate Head Office

Scott Aikin
Saikin@radcommsystems.com
Jeff Adams
jadams@radcommsystems.com
2931 Portland Drive
Oakville, ON Canada L6H 5S4
Tel. +1 (905) 829-8290
Toll Free. 1 (800) 588-5229
Fax. +1 (905) 829-1406

USA

Joshua Hunter
jhunter@radcommsystems.com
602 E. Lincolnway Ave.
Valparaiso, IN USA 46383
Tel. +1 (773) 680-8430
Toll Free. 1 (800) 588-5229
Fax. +1 (219) 510-5764

Europe

Wim van Hove
wim.van.hove@radcommeurope.com
Watertorenweg 32, 2230 Herselt, Belgium
Tel. +32.14.75.02.13
Fax. +32.14.75.02.16

Black Sea

Osman Tureyyen
metkim@metkim.com
Kavaik, Onarimli Sokak
No 9 Altay Han
Daire: 8 Beykoz, Istanbul, Turkey
Tel. +90 (216) 425-1412
Fax. +90 (216) 425-1432

Latin America

Eduardo Ballesteros
analiticacontrol@prodginy.net.mx
Amatista No.27, El Pedregal
Atizapan de Zaragoza, 52948, Estado De Mexico
Tel. (52) 55 5077 4633/ (52) 55 3615 4910

India

Neelakshi Bhargava
neelakshi@radcommsystems.co.in
C-34, Ground Floor, Sawan Park, Ashok Vihar
New Delhi 110052, India
Tel. +91-9717671924
Fax. +91-9818650118