

Pinpoint a potential radioactive source quickly and safely with an RC22 or RC23 Wand.

- Fully automatic and easy to use
- Lightweight
- Extendible for longer reach
- Easy to read backlit display
- Quick response time with variable alarm tone

RC22 & 23 WAND

TELESCOPIC RADIATION DETECTOR



Fully Automatic and Operator Friendly

The RC22 and RC23 were designed to allow fast and easy inspection of areas, containers or vehicles that may contain radioactive material. Upon start-up the unit will perform a background check and automatically set an alarm threshold for the user. In only seconds the RC22 and RC23 is ready for use.

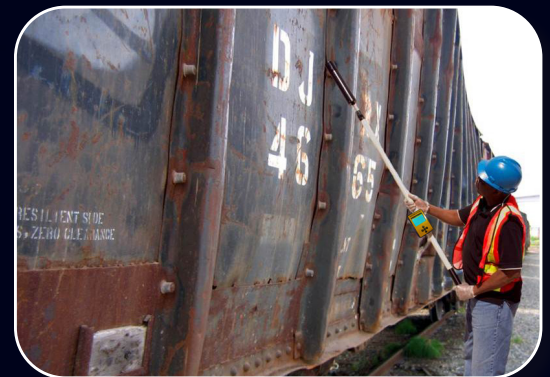
Easy to Read Display with Audible Alarm

When radiation is detected the display will immediately show the increasing radiation levels. An audio alarm will also be activated to help locate the exact source of the radiation. The tone varies based upon the proximity and intensity of the radioactive source.

Available In Two Lengths and Two Head Sizes

The RC22 is telescopic for a reach of 49" (124.5cm) to 99" (251.5cm). The telescopic pole serves two functions. One is to reach and scan an area that would normally be out of reach, and the second is to provide a safer operating distance between you and a potential radioactive source.

The wand is available in two different detector head sizes. The RC22 has a detector head size of 2" (5.1cm) for a total volume of 193cc. For greater sensitivity, the RC23 has a detector head size of 3" (7.6cm) for a total volume of 442cc.



RC22 & RC23 Specifications

Display

- Backlit RGB colour LCD 320x240 resolution
- Viewing area: 3.5"(8.9cm) TFT LCD
- Display radiation level in selected unit of measurement, battery life, background level, and alarm threshold

Operation

- Single button activation automatically sets audio alarm threshold level and displays unit of measurements (CPS, nSv/h, μ R/h)

Energy Response Range

- From 30Kev – 3.0Mev

Exposure Rate Range

- From 0 nSv/h – 10 μ Sv/h

Temperature Range

- -20°C to +60°C (-4°F to +140°F)

Battery

- 2 sets of NiMH 10,000 mA/h rechargeable or 2 sets of "D" cell batteries
- NiMH batteries last for about 15 hours on a full charge

Size

Model	Head Size	Extendible Length	Weight	Detector Size
RC22 Standard	2" (5.1 cm)	49" (124.5 cm) to 68" (172.7 cm)	5.2 lbs (2.36 kg)	193 cc
RC22 Long	2" (5.1 cm)	68" (172.7 cm) to 99" (251.5 cm)	5.4 lbs (2.72 kg)	193 cc
RC23	3" (7.6 cm)	49" (124.5 cm) to 68" (172.7 cm)	6.0 lbs (2.45 kg)	442 cc

Each RC22 and RC23 Package Includes:

- RC22 or RC23 fully charged and ready for use
- Carrying case
- Rubber tip boot cover (Quantity 2)
- Universal battery charger
- Operation manual



Corporate Head Office

Scott Aikin
 Saikin@radcommsystems.com
 Jeff Adams
 jadams@radcommsystems.com
 2931 Portland Drive
 Oakville, ON Canada L6H 5S4
 Tel. +1 (905) 829-8290
 Toll Free. 1 (800) 588-5229
 Fax. +1 (905) 829-1406

USA

Joshua Hunter
 jhunter@radcommsystems.com
 602 E. Lincolnway Ave.
 Valparaiso, IN USA 46383
 Tel. +1 (773) 680-8430
 Toll Free. 1 (800) 588-5229
 Fax. +1 (219) 510-5764



Europe

Wim van Hove
 wim.van.hove@radcommeurope.com
 Watertorenweg 32, 2230 Herselt, Belgium
 Tel. +32.14.75.02.13
 Fax. +32.14.75.02.16

India

Neelakshi Bhargava
 neelakshi@radcommsystems.co.in
 C-34, Ground Floor, Sawan Park, Ashok Vihar
 New Delhi 110052, India
 Tel. +91-9717671924
 Fax. +91-9818650118